

# NZ SILVER FERN RALLY

## Accommodation Options:

**November 22<sup>nd</sup> – 29<sup>th</sup> 2024**

### CHRISTCHURCH: 22<sup>ND</sup> – 24<sup>TH</sup> November

#### Commodore Airport Hotel: -

**Website:** [www.commodorehotel.co.nz](http://www.commodorehotel.co.nz)

**Phone:** +64 3358 8129

**Email:** [tiffanyboa@commodorehotel.co.nz](mailto:tiffanyboa@commodorehotel.co.nz)

Email Tiffany directly quoting 'Silver Fern Rally' or Reference number **#9711776**

Double/Queen & Family Rooms - \$229 NZD P/Night

**Approx. 12-minute drive to start/end of day venue**



## **Racecourse Motor Lodge**

[The Racecourse Hotel & Motor Lodge | Christchurch, NZ](#)

1 minute drive from Start/End of day venue.



## **311 Motel Riccarton:**

[311 Motel Riccarton - Tip-Top Accommodation selection in Christchurch](#)

3 mins drive from Start/End of day venue.



## **Amalfi Motor Lodge - Riccarton**

[Home | ASURE Amalfi Motor Lodge](#)

3 mins drive from Start/End of day venue



# Greymouth: 24<sup>th</sup> November

## Copthorne Hotel - Greymouth

Phone: +64 33768 5085

Email: [Copthorne.greymouth@millenniumhotels.co.nz](mailto:Copthorne.greymouth@millenniumhotels.co.nz)

Double/Queen & Twin Share rooms from \$220 P/Night

Call or Email Cindy to book directly quoting **'Silver Fern Rally'**.



## Bella Vista Motel - Greymouth

Website: [www.bellavista.co.nz/our-motels/greymouth](http://www.bellavista.co.nz/our-motels/greymouth)

Phone: +64 3768 7199

Studio & Twin Rooms available from \$160 NZD P/Night

Call Chris and quote **'Silver Fern Rally'** when making a reservation.



# TIMARU – 25<sup>TH</sup> – 27<sup>TH</sup> November:

## Baywatch Motor Lodge:

**Website:** [www.baywatchtimaru.co.nz](http://www.baywatchtimaru.co.nz)

**Phone:** +64 3688 1886

**Email:** [baywatch1@xtra.co.nz](mailto:baywatch1@xtra.co.nz)

Studio rooms sleeping 2-4 people from \$175 NZD P/Night

1 x House sleeping 8 people, 2 bathrooms, full sized lounge, and kitchen from \$250 NZD P/Night

Speak to Ray and quote **'Silver Fern Rally'** when making a reservation.



## Avenue Motor Lodge:

**Website:** [www.avenuemotorlodge.com](http://www.avenuemotorlodge.com)

**Phone:** +64 3684 8383

**Email:** [mail@avenuemotorlodge.com](mailto:mail@avenuemotorlodge.com)

Units sleeping 1-4 people from \$200 NZD P/Night

Call or email Mark quoting **'Silver Fern Rally'**



## **Harbour View Motel:**

**Website:** [www.harbourviewmoteltimaru.com](http://www.harbourviewmoteltimaru.com)

**Phone:** +64 3686 6811

**Email:** [harbourviewtimaru@xtra.co.nz](mailto:harbourviewtimaru@xtra.co.nz)

Studio & 2 Bedroom apartments from \$180 NZD P/Night

1 x House sleeping 8 with 2 bathrooms from \$350 NZD P/Night

Call or Email Kate quoting **'Silver Fern Rally'**.



## **Bay Viaduct Motor Lodge:**

**Phone:** +3686 6338

**Email:** [enquiries@bayviaduct.co.nz](mailto:enquiries@bayviaduct.co.nz)

Rooms sleeping 2-4 people plus 2-bedroom apartments from \$185 NZD P/Night

Call or email the property directly quoting **'Silver Fern Rally'**.



# DUNEDIN – 27<sup>TH</sup> – 29<sup>TH</sup> November:

## The Chamberson Hotel:

**Website:** [www.thechamberson.co.nz](http://www.thechamberson.co.nz)

**Phone:** +64 3470 1998

**Email:** [inbox@thechamberson.co.nz](mailto:inbox@thechamberson.co.nz)

1- & 2-Bedroom Apartments from \$220 NZD P/Night

Call/email or book online.



## Scenic Hotel Dunedin:

**Website:** [www.scenichotelgroup.co.nz/dunedin/scenic-hotel-dunedin-city/](http://www.scenichotelgroup.co.nz/dunedin/scenic-hotel-dunedin-city/)

**Phone:** +64 3470 1470

**Email:** [dunedincity@scenichotels.co.nz](mailto:dunedincity@scenichotels.co.nz)

1-bedroom Suites, 2 bedroom Apartments and Interconnecting rooms from \$300 NZD P/Night

Call/email or book online.





## **Kingsgate Hotel:**

**Website:** [www.millenniumhotels.com](http://www.millenniumhotels.com) (choose the Dunedin location)

**Phone:** +64 3477 6784

**Email:** [kingsgate.dunedin@millenniumhotels.co.nz](mailto:kingsgate.dunedin@millenniumhotels.co.nz)

Standard double and junior Suites from \$210 NZD P/Night

Call/email or book online.

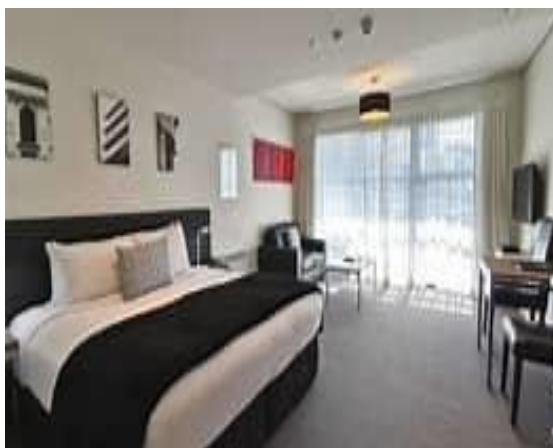


## **315 Euro Apartments:**

**Website:** [www.eurodunedin.co.nz](http://www.eurodunedin.co.nz)

**Phone:** +64 3477 9929

**Email:** [stay@eurodunedin.co.nz](mailto:stay@eurodunedin.co.nz)



**Studio and 1- & 2-Bedroom apartments from \$350 NZD P/Night**

Call/email or book online.

## **Wanaka/Queenstown – 29<sup>th</sup> November:**

### **Wanaka:**

#### **Lakeside Apartments:**

**Website:** [www.lakesidewanka.co.nz](http://www.lakesidewanka.co.nz)

**Phone:** 03 443 0188



1- & 2-bedroom apartments, some with full kitchen and dining facilities.

From \$245 NZD P/Night

Call or book online.

#### **The Moorings Motel & Apartments & Luxury Villas Wanaka**

**Website:** [www.themoorings.co.nz](http://www.themoorings.co.nz)

**Phone:** 03 443 8479

**Email:** [host@themoorings.co.nz](mailto:host@themoorings.co.nz)



Double/Twin and 2- & 3-bedroom Units from \$280 NZD P/Night

Luxury Villas from \$480 NZD P/Night

Call/email or book online.



## **Wanaka Heights Motel:**

**Website:** [www.wanakaheightsmotel.co.nz](http://www.wanakaheightsmotel.co.nz)

**Phone:** 03 443 1944

**Email:** [Info@wanakaheightsmotel.co.nz](mailto:Info@wanakaheightsmotel.co.nz)



Units sleeping 2-5 People from \$240 NZD P/Night

Call/email or book online.

## **Aspiring Lodge Wanaka:**

**Website:** [www.aspiringmotel.co.nz](http://www.aspiringmotel.co.nz)

**Phone:** 03 443 7816

**Email:** [aspiringlodge@xtra.co.nz](mailto:aspiringlodge@xtra.co.nz)



Double/Twin and 2-bedroom suites

From \$220 NZD P/Night

Call/email or book online.

## **Alpine Motel:**

**Website:** <https://www.alpinemotelwanaka.co.nz/>

**Phone:** 03 443 7960

**Email:** [info@alpinemotelwanaka.co.nz](mailto:info@alpinemotelwanaka.co.nz)



## **QUEENSTOWN:**

### **Novotel Queenstown Lakeside:**

**Website:** [www.novotelqueenstownlakeside.com](http://www.novotelqueenstownlakeside.com)

**Phone:** 03 442 7750

**Email:** [h5308-re2@accor.com](mailto:h5308-re2@accor.com)



Double and Twin Rooms from \$300 NZD P/night

Call/email or book online.

## **Hurleys Of Queenstown:**

Website: [www.hurleys.co.nz](http://www.hurleys.co.nz)

Phone: 03 442 5999

Email: [info@hurleys.co.nz](mailto:info@hurleys.co.nz)



1- & 2-bedroom studios and 2 bedroom apartments from \$250 NZD P/Night

Call/email or book online.

## **Crowne Plaza Queenstown:**

Website:

Phone: 03 441 0095

Email: [crowneplaza.queenstown@ihg.com](mailto:crowneplaza.queenstown@ihg.com)



Double/Twin and Suites from \$423 NZD P/Night

## **Rydge's Lakeland Resort:**

**Website:** [www.rydges.com/queesntown](http://www.rydges.com/queesntown)

**Phone:** 03 442 7600

**Email:** [reservations\\_rydgesqueenstown@evt.com](mailto:reservations_rydgesqueenstown@evt.com)



Double/Twin rooms and 2-bedroom suites from \$330 NZD P/Night

Call/email or book online.

## **Blue Peaks Lodge Queenstown:**

**Website:** [www.bluepeaks.co.nz](http://www.bluepeaks.co.nz)

**Phone:** 03 441 0437

**Email:** [info@bluepeaks.co.nz](mailto:info@bluepeaks.co.nz)



Studio/1 & 2 Bedroom apartments from \$195 NZD P/Night

Call/email or book online.

A list of preferred Rental Vehicle options and local attractions and activities for each region will follow shortly.

We hope you find this information helpful to plan your trip to New Zealand to be part of **Silver Fern Rally 2024**.

Please do not hesitate to get in touch if you have any questions at all.

**Lisa Ford**

**Event Administrator**

[info@urg.co.nz](mailto:info@urg.co.nz)

[www.silverfernally.co.nz](http://www.silverfernally.co.nz)

